



# GAT MONTHLY MEMBERSHIP PROGRESS REPORT

Results as of: 4/30/2023

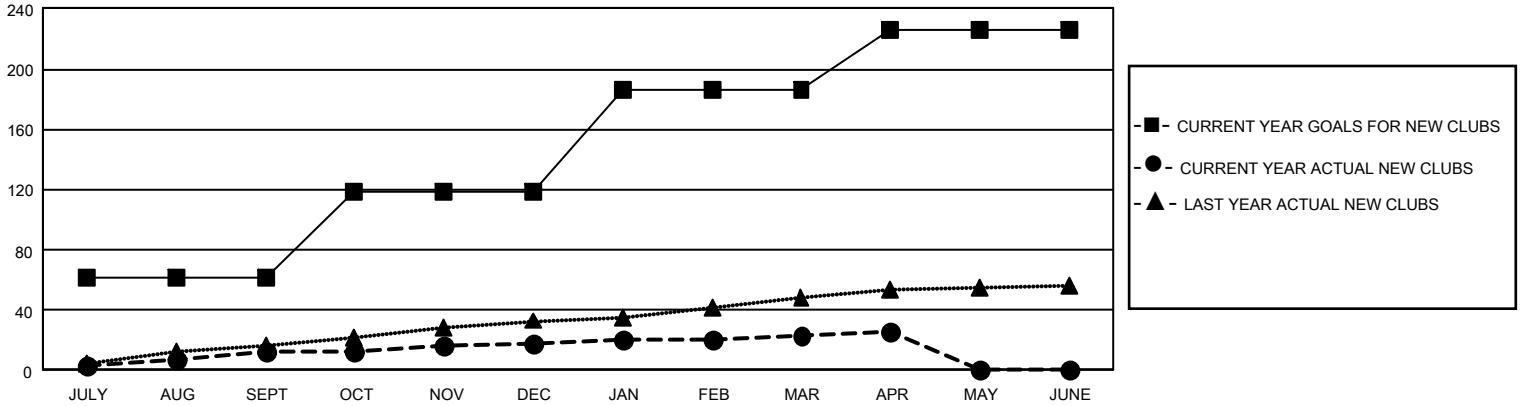
## GAT Constitutional Area 5 - Korea

REPORT DOES NOT INCLUDE CLUBS IN UNDISTRICTED AREAS.

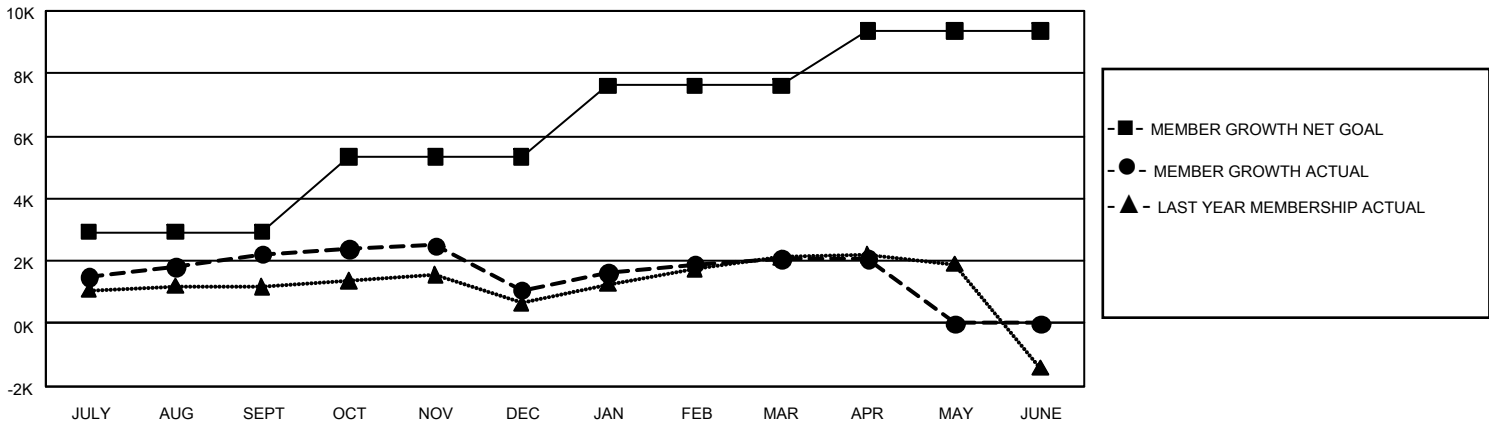
Clubs			
RESULTS FOR 2022-2023			
QUARTER	NEW CLUB GOAL	NEW CLUBS	DROPPED CLUBS
JULY/AUG/SEPT	183	12	12
OCT/NOV/DEC	174	6	16
JAN/FEB/MAR	201	5	8
APR/MAY/JUNE	120	3	0

Members			
RESULTS FOR 2022-2023			
QUARTER	MEMBER GROWTH NET GOAL	MEMBER GROWTH ACTUAL	DROPPED MEMBERS ACTUAL (including transfers)
JULY/AUG/SEPT	2925	4,708	2,305
OCT/NOV/DEC	2400	2,024	3,117
JAN/FEB/MAR	2293	2,552	1,429
APR/MAY/JUNE	1738	455	431

GOALS AND ACTUAL NEW CLUBS CUMULATIVE



GOALS AND ACTUAL MEMBERS CUMULATIVE



DROPPED CLUBS: 36	
<b>DROPPED MEMBERS</b>	
DECEASED	224
CLUB CANCELLED	373
OTHER	6,685
<b>TOTAL</b>	<b>7,282</b>

1,563 CLUBS OF 2,063 ADDED 1 OR MORE NEW MEMBERS

[CLICK HERE FOR CUMULATIVE MEMBERSHIP DATA](#)

GENDER DISTRIBUTION	
MALE	55,091 (74.16%)
FEMALE	19,191 (25.84%)
NON BINARY	0 (0.00%)
PREFER NOT TO ANSWER	0 (0.00%)
<b>TOTAL FAMILY UNIT MEMBERS</b>	<b>4,682</b>
<b>FAMILY MEMBERS PAYING HALF DUES</b>	<b>2,708</b>